

# HOW TO MAKE A DRAWSTRING BACKPACK

**THE FINISHED SIZE:** Approx. 14" Wide x 17" High  
(within 1/2" to 1" of either measurement is fine)

## 1. MATERIALS: (ALL INCLUDED IN KIT)

- Sturdy fabric rectangle 38" L x 15" W
- Two pieces of twill tape, each 4" long, for two loops.
- Two sturdy 2 yard cords (total 4 yards) for drawstring.

## 2. SEW

- Single fold & press (steam) all 4 edges of large fabric 1/2" in to wrong side of fabric and stitch the entire way around. Stitch long sides first. (Fig. 1)
- Fold down 1 1/2" to wrong side of fabric at each short end, press and stitch to form a casing for the drawstring. Stitch close to folded end at the top AS WELL AS the hem/ bottom of the casing. The seam line at the bottom of the casing will likely be on top of the edged hem you did previously. Back-stitch at the end of these seams. (Fig. 2)
- To make loops: Fold each loop tape in half lengthwise.
- Fold bag in half with RIGHT sides of material together. Insert a loop on each side between the two layers at the bottom of the bag so they will be sewn into the seam. Loop should be laying INSIDE the folded bag. Stitch seam 1/4" from side edges, along outside, from casingseam to bottom fold. Backstitch for durability. DO NOT STITCH THE CASIN CLOSEED! Turn bag right side out. (Fig. 3)

## 3. DRAWSTRING

- Run cord through the casing beginning and ending on the same side and through the same side loop. Repeat, beginning and ending on the opposite side.
- Tie ends of string with an overhand knot above the loop.



Figure 1

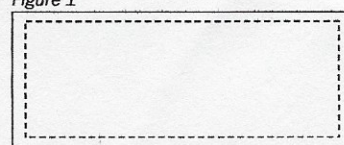
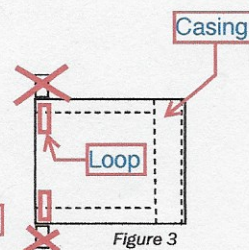
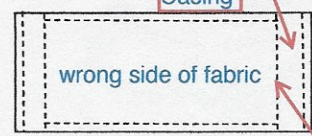


Figure 2



1 1/2" folded over to WRONG side of fabric.

1 1/2"



LUTHERAN WORLD RELIEF